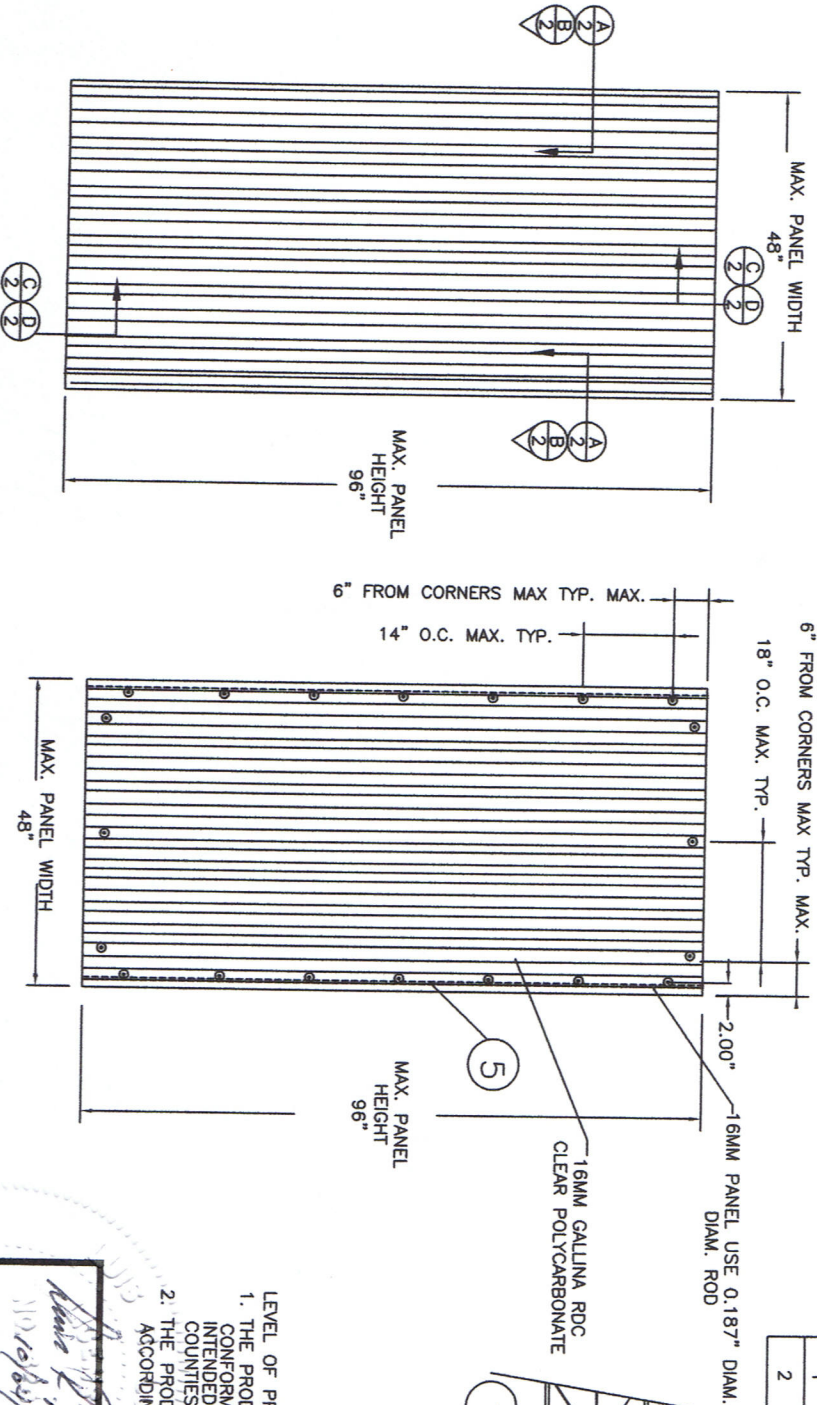


- NOTES:
1. THE PRODUCT SHOWN HEREIN IS DESIGNED AND MANUFACTURED TO COMPLY WITH THE 2004 FLORIDA BUILDING CODE.
 2. PANELS SHALL BE FASTENED ACCORDING TO FASTENER MANUFACTURERS INSTALLATION SPECIFICATIONS AND AS SHOWN HEREIN.
 3. PANEL FRAME MATERIAL: POLYCARBONATE PANELS 16 MM
 4. ANCHOR LOCATIONS AT EACH JAMB LOCATED AT 6" FROM EACH END AND MAXIMUM O.C. SPACING OF 14" O.C. TYPICAL.
 5. MAXIMUM PANEL SIZE 48" X 96"
 6. TOP AND BOTTOM DETAILS SHOWN MAY BE INTERCHANGED AS FIELD CONDITIONS DICTATE. PANELS MAY BE MOUNTED HORIZONTALLY WHERE APPLICABLE.
 7. ALL BOLTS AND WASHERS SHALL BE GALVANIZED OR STAINLESS STEEL WITH A MINIMUM TENSILE STRENGTH OF 60 K.S.I. UNLESS MADE OF RUBBER.
 8. MINIMUM SEPARATION BETWEEN PRODUCT AND GLASS WINDOW TO BE 4.00" MIN.

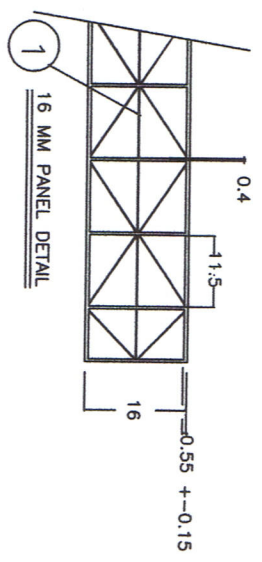
EXTERIOR ELEVATION
16 MM

ANCHOR ELEVATION
16 MM



BILL OF MATERIALS	
ITEM #	PART #
1	2161
2	PURCHASE
3	PURCHASE
4	PURCHASE
5	PURCHASE

TABLE OF CONTENTS	
SHEETS	SHEET DESCRIPTION
1	ELEVATION & ANCHORING NOTES & B.O.M.
2	INSTALLATION DETAILS IN CONCRETE & WOOD FRAME



MAXIMUM ALLOWABLE
DESIGN PRESSURE
+60.0 PSF
-60.0 PSF

- LEVEL OF PROTECTION:
1. THE PRODUCT SHOWN HEREIN IS DESIGNED AND MANUFACTURED TO CONFORM TO WINDZONE 4 GREATER THAN 140 MPH, HOWEVER IS NOT INTENDED FOR USE IN FLORIDAS "HMHZ" DEEMED AS DADE & BROWARD COUNTIES.
 2. THE PRODUCT SHOWN HEREIN IS TESTED TO LARGE MISSILE LEVEL D ACCORDING TO ASTM 1886-02 & ASTM 1996-02.

Handwritten signature and date: 10/06/05

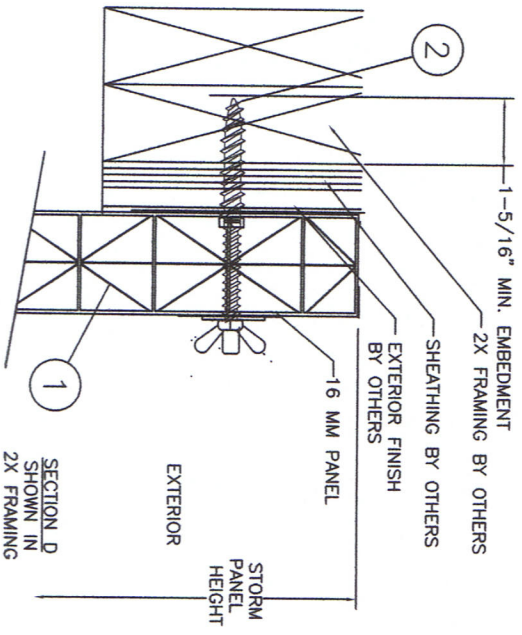
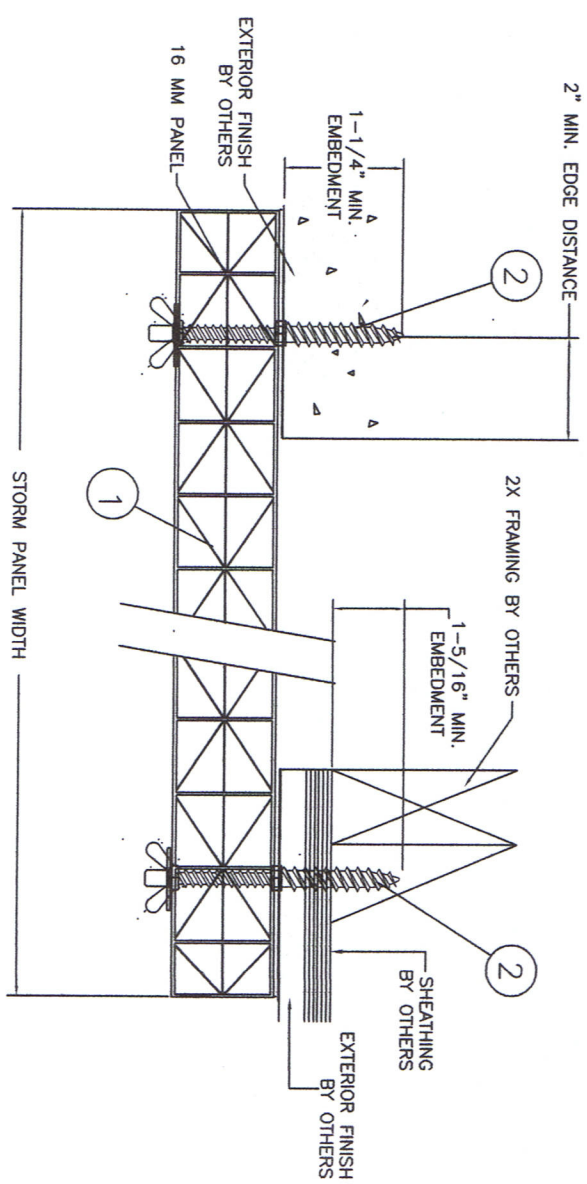
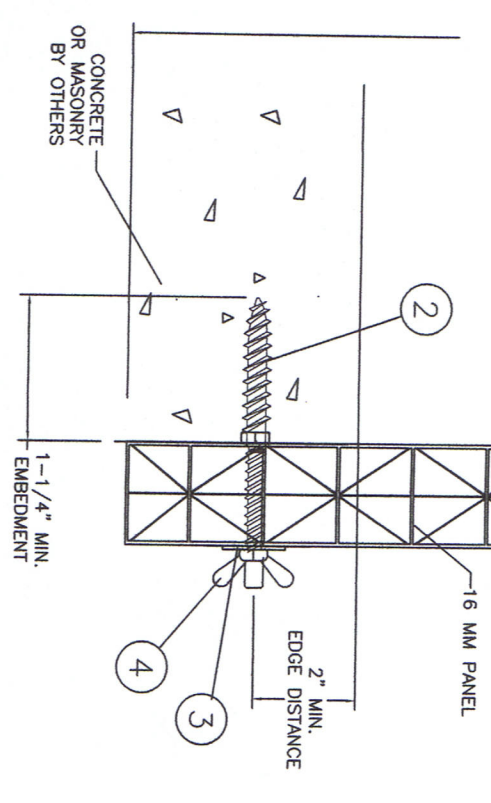
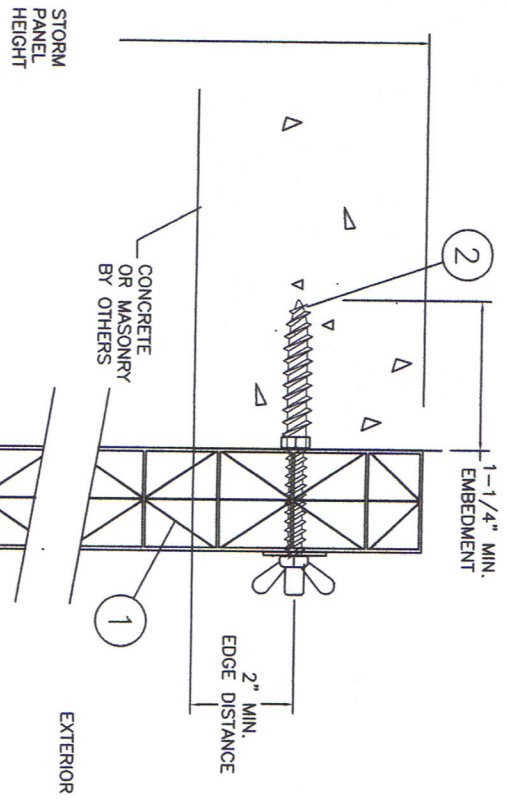
L. Roberto Lora, P.E.
Florida P. E. No. 62314
RVC Engineering, Inc.
2381 S.E. Stearny Lane
Port St. Lucie, Florida 34852

GALLINA USA LLC
245 EAST MADISON AVE.
MILTON, WI 53563

16 MM POLYCARBONATE STORM PANEL
ELEVATION DETAILS

PRO: JRM
SCALE: NTS
DATE: 09-19-05
REV: GAL-0002-1
SHEET: 1 OF 2

Phone 772.298.4630 Fax 772.298.4664



GALLINA USA LLC
245 EAST MADISON AVE.
MILTON, WI 53563

16 MM POLYCARBONATE STORM PANEL
ANCHOR DETAILS CONCRETE & WOOD FRAME

PREPARED BY: **PTC**
PTC ENGINEERING, INC.
Phone: 772.398.4839 Fax: 772.398.4864

DATE: 09-19-05
SCALE: NTS
SHEET: 2 OF 2

DESIGNED BY: **L. Richard Lamm, P.E.**
2381 S.E. Seabury Lane
Fort St. Louis, Florida 34652
Phone: 772.398.4839

APPROVED BY: **L. Richard Lamm, P.E.**
10/24/05

TYPE Certificate of Authorization NO. 25835