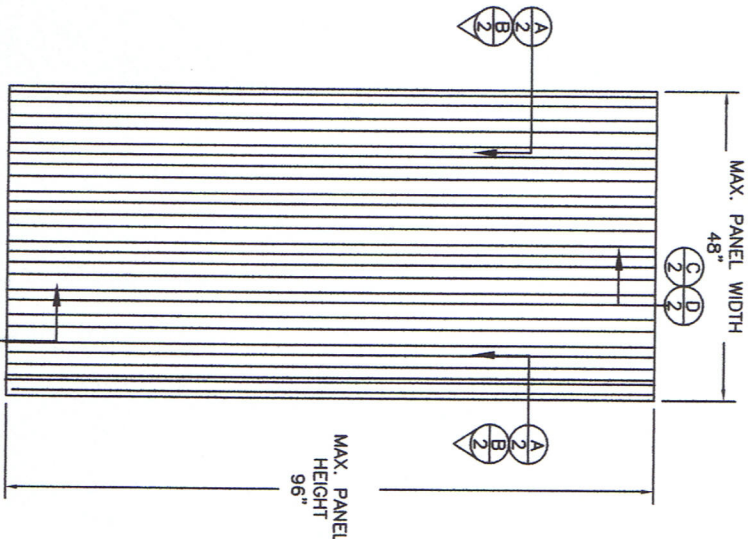
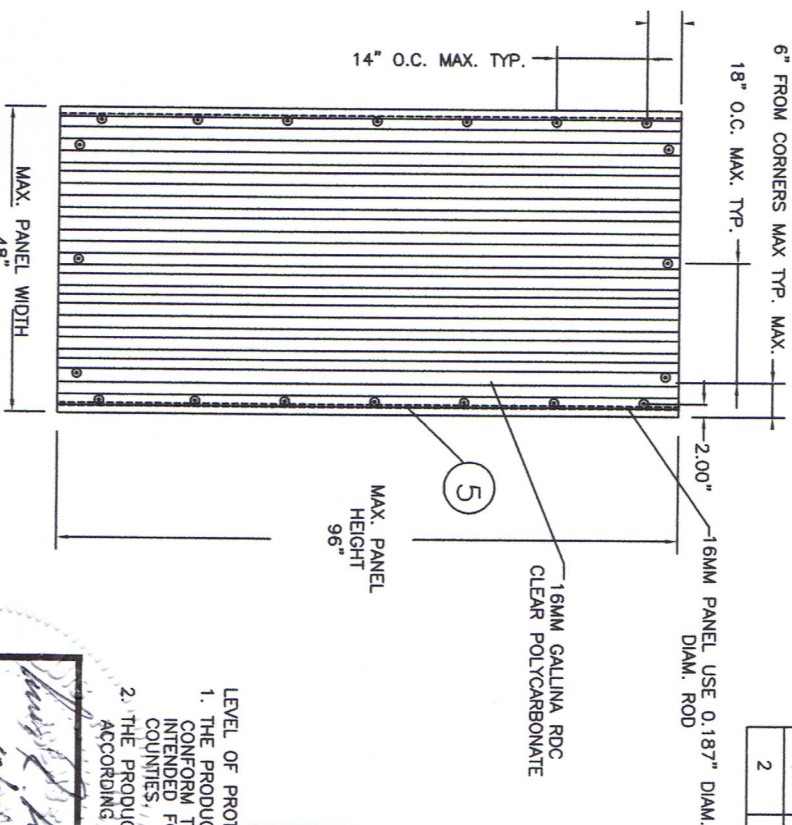


- NOTES:
1. THE PRODUCT SHOWN HEREIN IS DESIGNED AND MANUFACTURED TO COMPLY WITH THE 2004 FLORIDA BUILDING CODE.
 2. PANELS SHALL BE FASTENED ACCORDING TO FASTENER MANUFACTURERS INSTALLATION SPECIFICATIONS AND AS SHOWN HEREIN.
 3. PANEL FRAME MATERIAL: POLYCARBONATE PANELS 25 MM
 4. ANCHOR LOCATIONS AT EACH JAMB LOCATED AT 6" FROM EACH END AND MAXIMUM O.C. SPACING OF 14" O.C. TYPICAL.
 5. MAXIMUM PANEL SIZE 48" X 96"
 6. TOP AND BOTTOM DETAILS SHOWN MAY BE INTERCHANGED AS FIELD CONDITIONS DICTATE. PANELS MAY BE MOUNTED HORIZONTALLY WHERE APPLICABLE.
 7. ALL BOLTS AND WASHERS SHALL BE GALVANIZED OR STAINLESS STEEL WITH A MINIMUM TENSILE STRENGTH OF 60 K.S.I. UNLESS MADE OF RUBBER.
 8. MINIMUM SEPARATION BETWEEN PRODUCT AND GLASS WINDOW TO BE 4.00" MIN.

EXTERIOR ELEVATION
25 MM

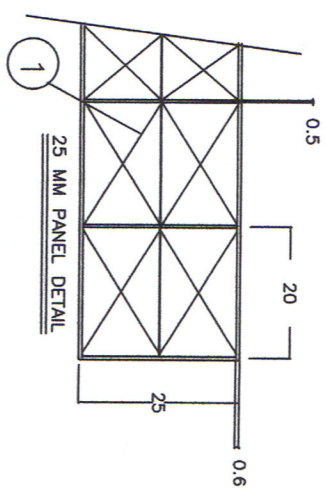


ANCHOR ELEVATION
25 MM



BILL OF MATERIALS	
ITEM #	PART #
1	2151
2	1/4-20" X 3 1/2" PANEL MATE MALE FASTENER
3	1-3/8" STEEL WASHER
4	STEEL WING NUT
5	FIBERGLASS ROD (0.250) THICK

TABLE OF CONTENTS	
SHEETS	SHEET DESCRIPTION
1	ELEVATION & ANCHORING NOTES & B.O.M.
2	INSTALLATION DETAILS IN CONCRETE & WOOD FRAME



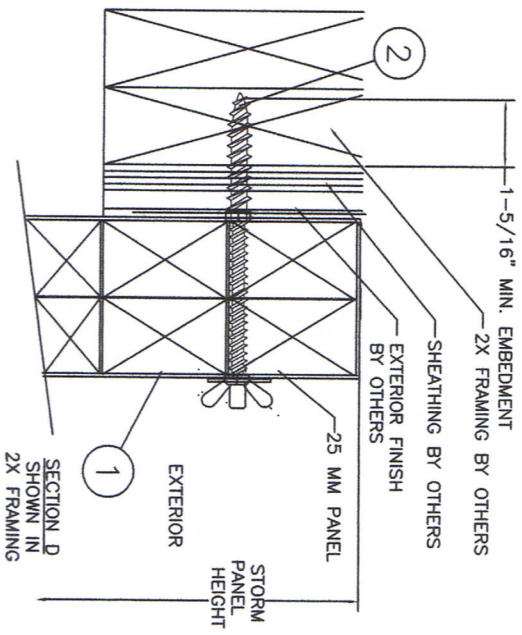
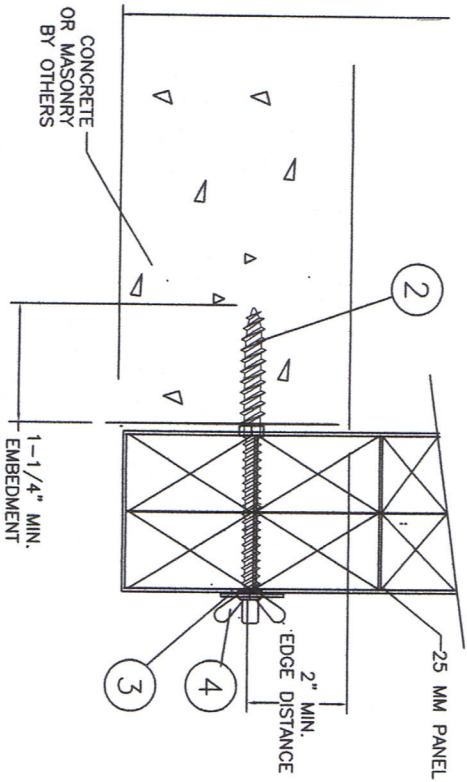
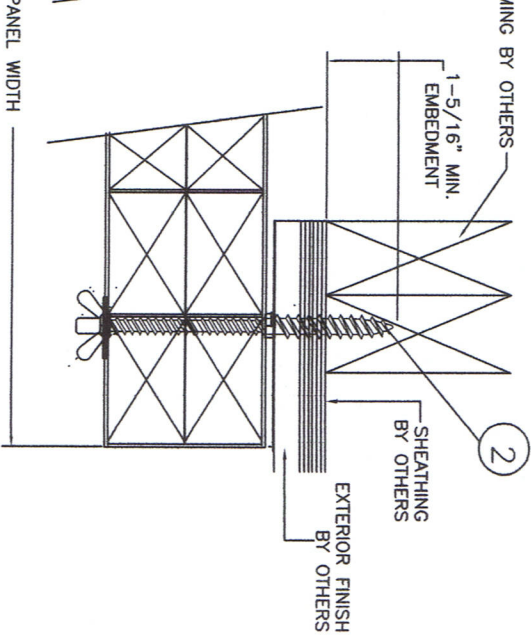
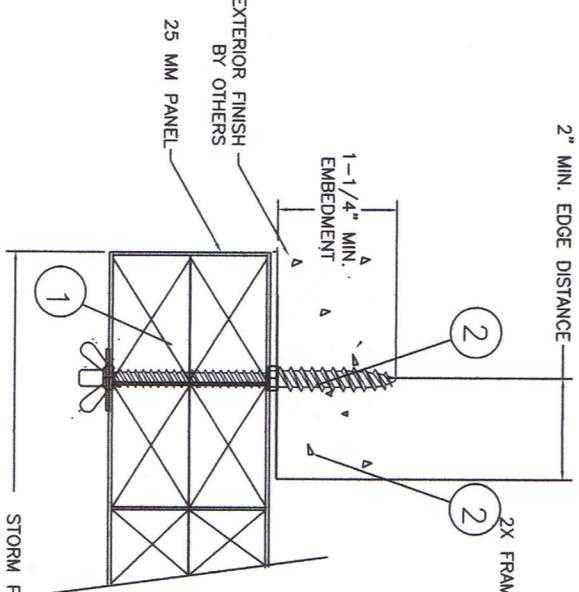
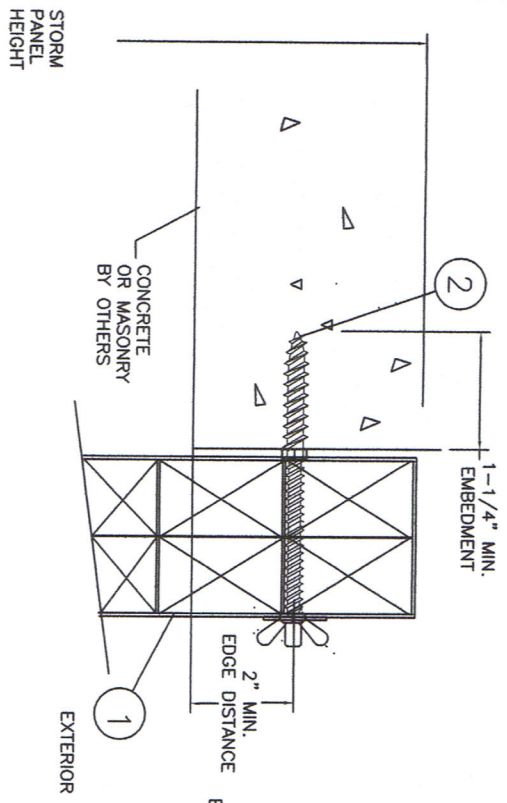
MAXIMUM ALLOWABLE
DESIGN PRESSURE
+80.0 PSF
-80.0 PSF

- LEVEL OF PROTECTION:
1. THE PRODUCT SHOWN HEREIN IS DESIGNED AND MANUFACTURED TO CONFORM TO WINDZONE 4 GREATER THAN 140 MPH. HOWEVER IS NOT INTENDED FOR USE IN FLORIDAS "HVHZ" DEEMED AS DADE & BROWARD COUNTIES.
 2. THE PRODUCT SHOWN HEREIN IS TESTED TO LARGE MISSILE LEVEL D ACCORDING TO ASTM 1886-02 & ASTM 1996-02.

L. Roberto Larios, P.E.
 Registered Professional Engineer
 PRC Engineering, Inc.
 2361 S.E. Seelye Lane
 Port St. Lucie, Florida 34952
 Date Certificate of Approval: 10/24/05

GALLINA USA LLC
 245 EAST MADISON AVE.
 MILTON, WI 53563
 25 MM POLYCARBONATE STORM PANEL
 ELEVATION DETAILS

PREPARED BY: PRC ENGINEERING, INC.
 DATE: 09-19-05
 SCALE: NTS
 SHEET: 09-19-05 OF 2



GALINA, USA, LLC 245 EAST MADISON AVE. MILTON, WI 53563	
TITLE: 25 MM POLYCARBONATE STORM PANEL ANCHOR DETAILS CONCRETE & WOOD FRAME	
PREPARED BY: JRM	DATE: 09-19-05
SCALE: NTS	DATE: GAL-0003-1
REV: 2	OF 2

L. Roberto Lamas, P.E.
Florida, P. E. No. 62514
PTC Engineering, Inc.
2361 S.W. 32nd Ave.
Fort St. Union, Florida 32052

10/04/05

TYPE Certificate of Authorization NO. 20035